

EVERY TREE COUNTS

Support available to landowners and farmers in
Leeds for woodland creation.



In partnership with



INTRODUCTION

The White Rose Forest is the community forest for North and West Yorkshire. Every tree planted in our region helps to grow the forest and benefits local communities.

Leeds City Council is part of the White Rose Forest partnership. Leeds has set an ambitious aim to practically double tree cover across the Leeds district by 2050. We have already committed to planting 1250 hectares of trees on council land to help make Leeds a healthier, greener and more environmentally friendly place. Landowners and farmers will also have a vital role to play to meet this ambitious citywide target.

We recognise that planting woodland is a significant business decision. That's why The White Rose Forest will provide you with free guidance on the costs, benefits and funding available to help you make an informed choice before deciding to plant. They can also help you to secure the funding.

The partnership is here to help all landowners and farmers in the Leeds district. If you are interested in planting trees on your land, read on to find out more about support available and how to get involved.

Finally, I would like to thank you for your interest in helping to grow the White Rose Forest and making Leeds a healthier, happier, and greener district. I hope that you find this information useful.



Councillor Salma Arif
Executive Member for
Public Health and Active Lifestyles

WHAT ARE THE BENEFITS OF TREE PLANTING?

The potential financial benefits of tree planting for landowners and farmers include revenue from carbon unit sales, agroforestry or sales of timber. Trees are also subject to various tax reliefs.

Other benefits include managing soil erosion, flood alleviation, improving animal welfare, providing shelter for crops and game, increasing habitat for pollinators, helping with wildlife conservation and capturing carbon.

More info can be found at
www.leeds.gov.uk/trees

HOW WE CAN SUPPORT YOU

The White Rose Forest partnership can help facilitate tree planting and woodland creation by working with you and/or your land agent. There is a range of free support available from our partners, accessed via the White Rose Forest partnership.

We can support different sizes of woodland and individual tree planting and we will ensure that tree planting will complement existing agricultural systems and is viable for your land.

FREE SUPPORT AVAILABLE FOR PLANTING WOODLANDS

Funding

We can help you apply for grant funding to plan, fund and plant trees on your land via the White Rose Forest Funders' Group. The group is made up of funders including the Forestry Commission, Woodland Trust and Trees for Cities and others.

Planning and design

We can support you in designing new woodlands to achieve your objectives and maximise wider benefits to society. We will ensure that the right trees are planted in the right place.

Engagement with stakeholders

Part of a well-designed woodland is seeking the advice and approval of a range of statutory and local stakeholders. We can support this engagement process.

Compliance with forestry regulations

We can help you work with the relevant authorities to secure any necessary permissions needed for your project to become a reality.

Delivery

We can help you source trees and find the resources needed to plant them.



SUPPORT MANAGING WOODLANDS

As well as helping with planting, The White Rose Forest will share best practice advice to support you with managing your new woodland to maximise its benefits.

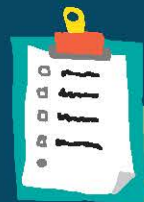


HOW DO I APPLY?

If you own or tenant land in Leeds then find out more about the benefits and support available and to register your interest in tree planting by completing our online form at: www.leeds.gov.uk/trees

Registering your interest does not commit you to planting.

HOW IT WORKS



White Rose Forest contacts applicant and visits site



White Rose Forest shares suitable funding opportunities with applicant to consider



Funding contract signed



White Rose Forest support applicant to plant trees



Payment received for planting



CASE STUDY

Helen's late father-in-law planted 13 hectares of woodland in 2002. The land was a former maize field which had been farmed, but Helen's father-in-law had identified that the benefits of changing the land use could outweigh the revenue from continuing to farm the land. Wood that is cut down through thinning provides a long-term timber crop and is now dried and sold as firewood to the nearby village. Wildlife has increased in the woodland.

Helen and her partner earn extra income under the '28-day rule' where landowners can use their land for alternative uses other than woodland for up to 28 days a year. Helen's alternative uses include a forest school for children, forestry events and short courses, which benefits the local community.

We can advise on land use changes like these and the other benefits of planting woodland.

*Credit: Forestry Commission



WHAT IS THE WHITE ROSE FOREST?

The White Rose Forest is the community forest for North and West Yorkshire. Every tree planted in our region helps to grow the forest and benefits local communities.

The White Rose Forest Partnership works with local authorities, businesses, communities, landowners, third sector organisations and academic institutions to increase woodland and improve our natural environment.

The Partnership aims to make tree planting a seamless process for landowners by providing support and expertise to help with the planning, design and delivery of new woodland.

In Leeds, the White Rose Forest is supported by Leeds City Council. It contributes towards the bold ambition set out in the city's strategy to practically double tree canopy cover across the district.

FURTHER INFORMATION

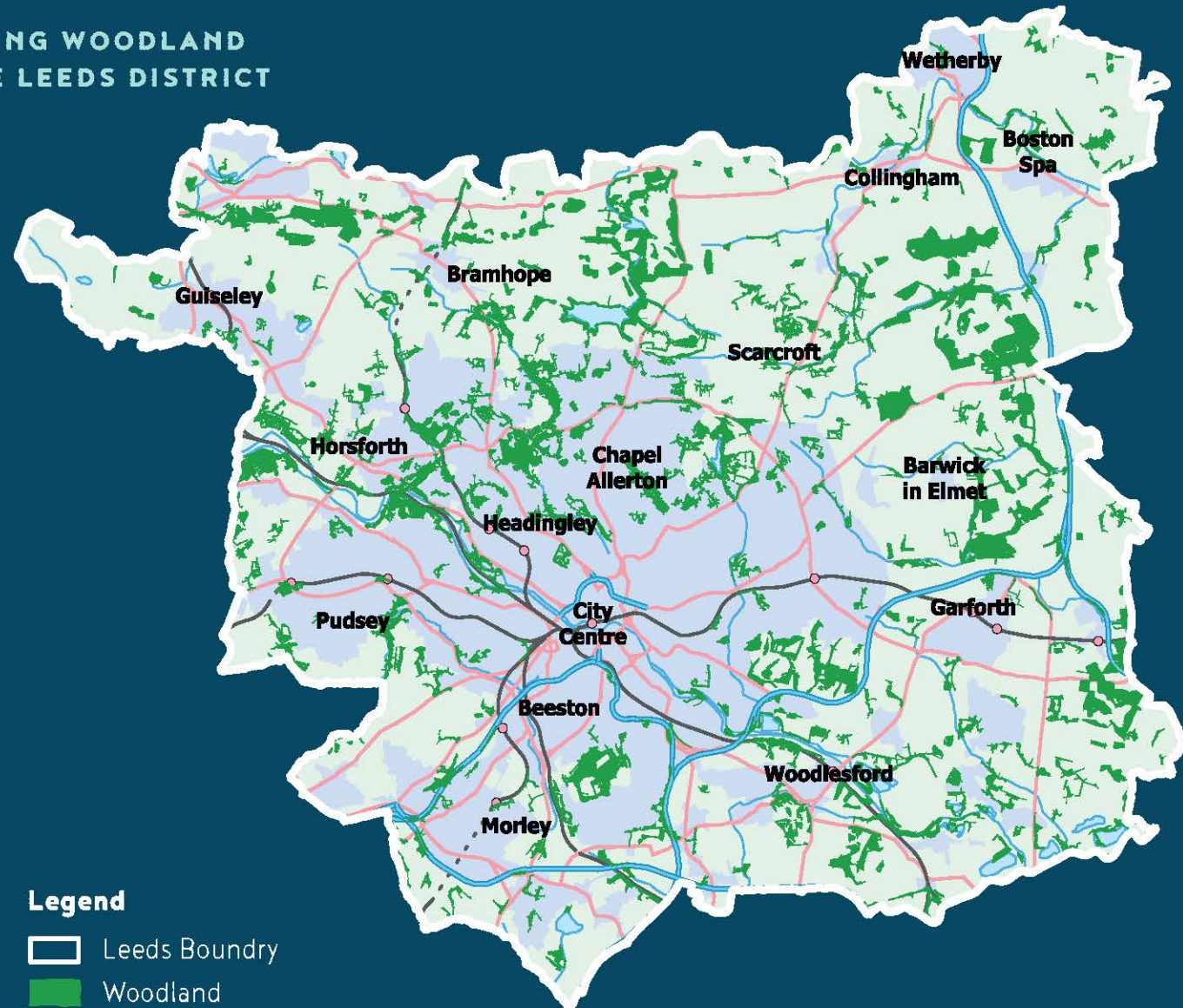
Check out our website or contact us by email if you have any further questions about funding and support for tree planting in Leeds.

✉ WRF@leeds.gov.uk

🌐 www.leeds.gov.uk/trees

🐦 @whiteroseforest

EXISTING WOODLAND IN THE LEEDS DISTRICT



Legend

- Leeds Boundary
- Woodland
- Urban Areas

